

SMS TOUCH WALL-FLOOR MOTORIZED



Ready. Steady. Touch.

Increases interaction with heavy touch-sensitive screens. The bracket has electrical height adjustment that makes it easy to adapt the screen to different users, and a design that prevents the screen from shaking when touched. Gracile yet robust, with fixed anchoring at the wall and support from the floor. Suitable for use with most common screens.

SMS TOUCH WALL-FLOOR

INFO

- Finish: white
- Maximum load: 75 kg
- Stroke: 675 mm
- Guarantee: 2 years.
- Recommended screen size: 46-70".

ART. NO

TT091001-P0

DESCRIPTION

SMS Touch Wall-Floor Motorized

Accessory:

PD100001EU

SMS X Power Socket EU Black

PD100002CH

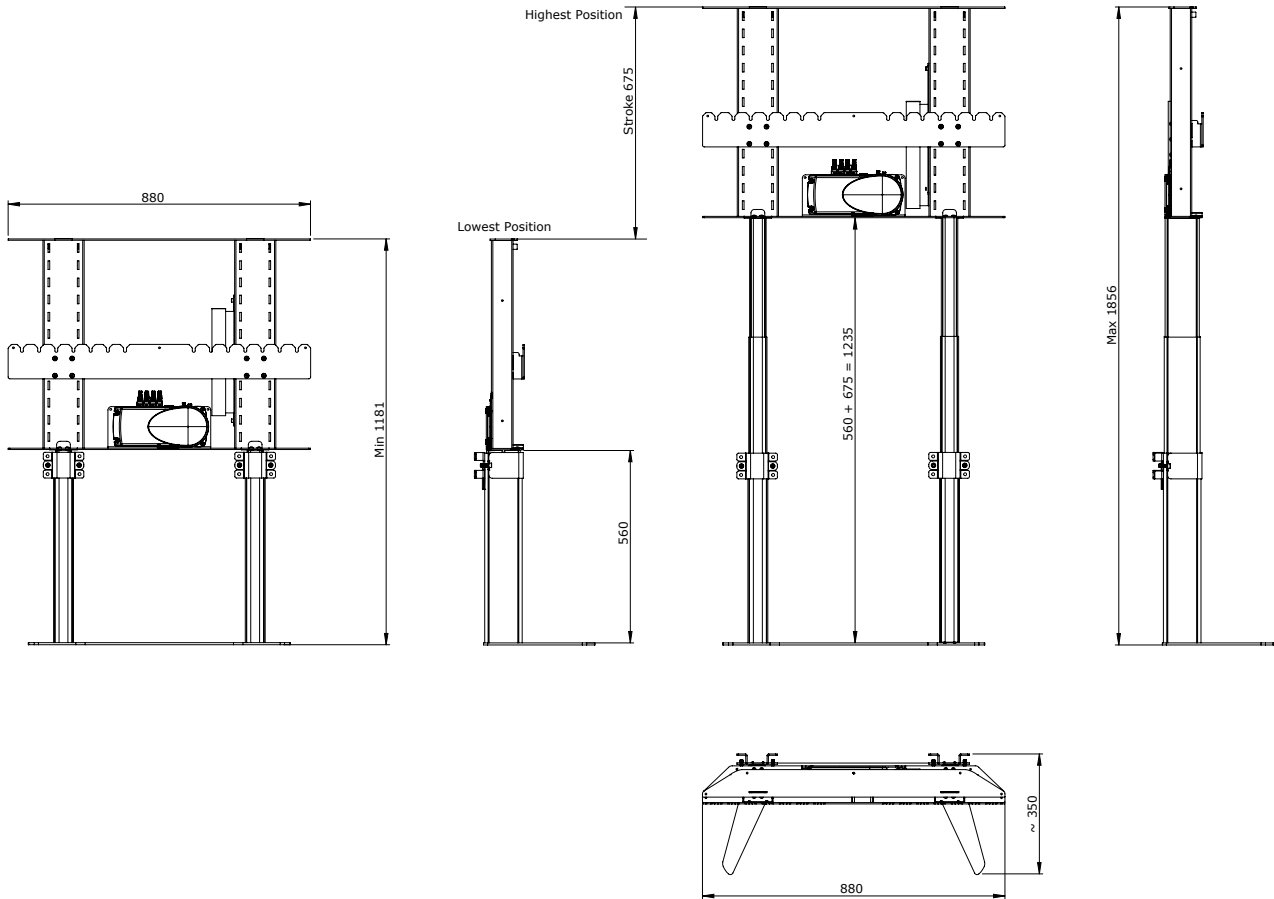
SMS X Power Socket CH Black

PD100003UK

SMS X Power Socket UK Black

Suitable for all VESA standards between 200 x 200 and 800 x 400 mm.

Accessories: An electrical power unit that collects all of the power cables for the installation (from screen, computer, etc.) so that only one cable to the wall socket is necessary.



SMART MEDIA SOLUTIONS

www.SmartMediaSolutions.se